

ASTEPAHEAD

custom guided journeys

RIFT VALLEY GREEN SEASON SAFARI TANZANIA - 13 DAYS- DECEMBER TO FEBRUARY

Thirteen days in four entirely different geological areas give you a sense of the size and variety in Tanzania. We drive westwards throughout the safari, and fly back to Arusha at the end.



13-DAY ITINERARY - DECEMBER TO MARCH - Key to meals included - B=Breakfast, L = Lunch, D=Dinner

Day 1	Arrive on international flight. Drive 1 hour to Ngare Sero Mountain Lodge for 2 nights	D only
Day 2	Visit Arusha National Park - 2nd night at Ngare Sero Mountain Lodge.	B,L,D
Days 3-5	Drive to Tarangire for 3 nights in a Kuro Tented Camp	B,L,D
Days 6 & 7	Drive to Ngorongoro for 2 nights at Ngorongoro Crater Lodge or Entamanu Camp	B,L,D
Days 8&9	Drive to Maasai tribal area for 2 nights at Seasonal Luxury Tented Camp ,	B,L,D
Days 10-12	Drive to Serengeti Plains for 3 nights at Seasonal Luxury Tented Camp ,	B,L,D
Day 13	Last day - Day rooms at Ngare Sero Lodge, transfer to international airport and fly home	B,L

A Step Ahead * Custom Guided Journeys

A Step Ahead S.L. Plaza Mayor 16, Baraguás, 22714 Huesca, SPAIN - Licence C.A.A. 230 -Fiscal (Tax) number B22347983
Tel:+34 974 36 33 31 Cell:+34 650 27 27 05 Fax:+34 974 56 00 75 Email info@astepahead.es Web www.astepahead.es

HIGHLIGHTS

We witness several entirely different landscapes on this safari. We set out from Arusha, which is in the shadow of a massive extinct volcano, and drive into the Great Rift Valley. Tarangire National Park attracts congregations of elephants at this time of year. We then continue westwards by road, through towns and villages, climbing the Rift escarpment to Ngorongoro Crater, another outstanding geological feature. The Crater floor has some of the highest densities of large mammals on Earth. Our last 6 days visits two parts of the Serengeti Plains, one outside the national park, and ideal for getting to know the pastoral Maasai tribe and enjoying opportunities to walk. The other is inside the Serengeti National Park, and should be perfect to witness the Great Migration and follow the antics of some of Africa's largest predators. We fly back to Arusha at the end.



ACTIVITIES

Activities shown in *italics* may be possible if requested before finalizing the itinerary, and with prior planning.

Arusha - (if there is time) *shopping, massages (extra cost), visiting markets or schools*

Tarangire - game drives night drives, bush walks (12 years and older), *fly camping (12 years and older - depends on which camp we book in Tarangire, so this must be decided in the early stages before finalizing the itinerary), balloon flight (extra cost - around \$600)*

Ngorongoro Crater - game drive in Ngorongoro Crater, *walks and cultural visits may be possible outside the Crater if staying in a tented camp.*

Maasai area of the Serengeti Plains - game drives, walks (minimum age 12), school visits, shopping for crafts, Maasai homestead visit, *fly camp (minimum age 12).*

Central Serengeti Plains - game drives, *Olduvai Gorge visit if on the way*

A Step Ahead * Custom Guided Journeys

A Step Ahead S.L. Plaza Mayor 16, Baraguás, 22714 Huesca, SPAIN - Licence C.A.A. 230 -Fiscal (Tax) number B22347983
Tel:+34 974 36 33 31 Cell:+34 650 27 27 05 Fax:+34 974 56 00 75 Email info@astepahead.es Web www.astepahead.es

CLIMATE

Northern Tanzania is only 250-400kms (155-250mi) from the Equator. This means that altitude is a more significant influence on temperatures than time of year. Overall the climate is very mild and comfortable. During the green season months temperatures are approximately as follows:-

Arusha - 1,400m a.s.l. (4,590 feet); min of about 14°C (57°F) and max of about 29°C (84°F).

Tarangire - 1100m a.s.l. (3,600 ft) July - min of about 14°C (57°F), and max of about 25°C (77°F)

Lake Manyara - 960m (3,150 feet) a.s.l., min of about 17°C (63°F), and a max of about 32°C (90°F).

Ngorongoro Crater Rim - 2,200m (7,200 feet) - min of about 14°C (57°F) and max of about 28°C (82°F).

Serengeti ~1,600-2,000m (5,250-6,560 ft) a.s.l. - min of about 15°C (59°F), and a max of about 29°C (84°F).

FLIGHTS TO / FROM TANZANIA

International flights - We do not book international flights. You should fly to and from Kilimanjaro International Airport (JRO), which is around 1 hour drive from Arusha. KLM departs daily from Amsterdam around 10am and flies direct to JRO, arriving around 8pm. The return flight departs around 10pm, stops in Dar-es-Salaam, and arrives in Amsterdam around 7am the next morning.



Qatar Airways departs daily at about 9am from Doha (Qatar) and arrives in Kilimanjaro Airport between 2:30pm and 4:30pm. The return flight departs JRO between 3:30pm and 5:30pm and arrives in Doha at 10:40pm (the arrival and departure times vary according to whether or not it stops on the way).

Emirates/Fly Dubai and Ethiopian Airlines can be good options. Turkish Airlines also fly direct to Kilimanjaro, although their arrival and departure times are not so convenient. Swiss Air and several other airlines have flights into Dar es Salaam. British Airways, Kenya Airways and others fly into Nairobi, Kenya. The best connections to/from the USA are KLM (SkyTeam/Delta partner) & Qatar/Fly Dubai (OneWorld).

Regional flights - Regional flights within Tanzania will be quoted depending on the routing required, and are not included in the safari cost.

PARTICIPATION REQUIREMENTS

This highly varied safari can be tailored to suit almost any group's needs, and is excellent for children from 8 years upwards. Young children should share the tent/room with an adult, and may not be allowed to participate in some activities such as bush walks or fly camping. If there are any special needs (such as elderly people, or young children), it is crucial that we are informed before designing the itinerary for you, as these could influence our choice of lodges or places recommended. We can tailor this itinerary to most groups. For instance, we can maximize wildlife viewing and photographic opportunities, or offer a blend of activities, including opportunities for cultural interaction and to be more active.

A Step Ahead * Custom Guided Journeys

A Step Ahead S.L. Plaza Mayor 16, Baraguás, 22714 Huesca, SPAIN - Licence C.A.A. 230 -Fiscal (Tax) number B22347983
Tel:+34 974 36 33 31 Cell:+34 650 27 27 05 Fax:+34 974 56 00 75 Email info@astepahead.es Web www.astepahead.es

ARUSHA NATIONAL PARK

Due to its proximity to renowned Ngorongoro Crater and Mt Kilimanjaro, Arusha National Park is often overlooked. However this park of only 552 km² (213 mi²) has astounding variety of landscapes and scenery, substantially different to the habitats encountered in other places on a safari in Tanzania.

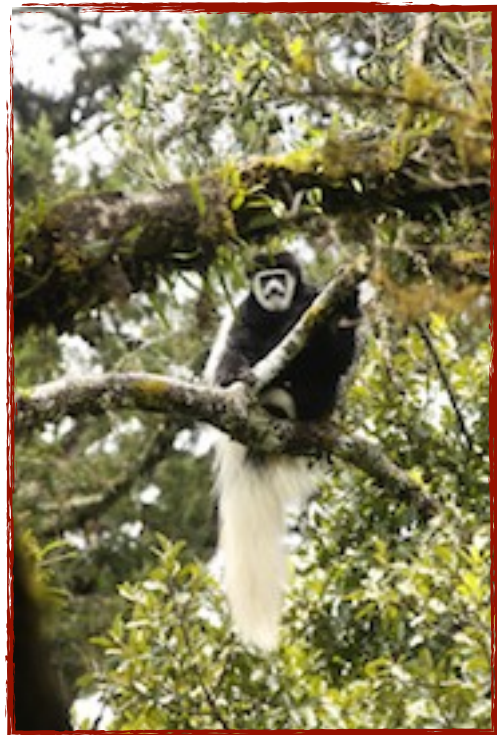


The park comprises several soda lakes, each with different consistencies of salts, algae and other organisms, resulting in different hues. Much of the park is covered in dense montane forest, an ideal habitat for primates such as olive baboon, blue monkey and black and white colobus monkey) and many of the forest antelope - bushbuck, red duiker and the tiny suni. The forest glades are popular with Cape buffalo, waterbuck, warthog, zebra and giraffe. Most dramatic are its volcanic mountains, Ngurdoto Crater and massive Mount Meru, Africa's fifth highest mountain at 4,566m (14,980ft), which towers above the forest, its upper reaches often hidden in cloud.

Here it is possible to go for game drives, for short walks with an armed ranger or do canoe activities (the last 2 activities must be arranged when planning your safari). On clear days we have excellent views of Mt Meru and Mt Kilimanjaro.

NGARESERO MOUNTAIN LODGE

[Ngare Sero](#) is one of the oldest family lodges in East Africa. It is a set in lush gardens with crystal clear lakes in a 50-acre forest reserve on the slopes of Mt Meru. The original lodge



A Step Ahead * Custom Guided Journeys

A Step Ahead S.L. Plaza Mayor 16, Baraguás, 22714 Huesca, SPAIN - Licence C.A.A. 230 -Fiscal (Tax) number B22347983
Tel:+34 974 36 33 31 Cell:+34 650 27 27 05 Fax:+34 974 56 00 75 Email info@astepahead.es Web www.astepahead.es

was a farmhouse built by German colonist August Leue in 1905. The farm changed hands after the First World War, and fell into disrepair until engineer Mike Leach and his wife Gisela discovered and bought it in 1974, transforming it into a boutique lodge.



The lodge is now run by their son, Tim and his wife. It offers 10 garden rooms, 3 suites in the main house and a separate Farm cottage. There is a trout lake in front of the main house and several species of monkey inhabit the forest. At night bushbabies cry and nightjars rhythmically call. In the morning we are woken by the calls of doves and the smell of fresh roasted coffee.

Ngaresero is only a 40 minute drive from Kilimanjaro Airport, a 15-20-minute drive from the Arusha National Park entrance gate, and a 1-hour drive from Arusha Town and airport.

ACTIVITIES (*those in italics should be requested before the safari*) Game drive and/or walk in Arusha National Park, 30m lap pool, boating on the lake, croquet, trout farm visit, *cultural visit to a market, homestead or school. Mountain biking, horse riding and private yoga classes are available at extra cost.*



COMMUNICATION - There is a phone at reception, cellphone coverage and wifi in the main areas.

A Step Ahead * Custom Guided Journeys

A Step Ahead S.L. Plaza Mayor 16, Baraguás, 22714 Huesca, SPAIN - Licence C.A.A. 230 -Fiscal (Tax) number B22347983
Tel:+34 974 36 33 31 Cell:+34 650 27 27 05 Fax:+34 974 56 00 75 Email info@astepahead.es Web www.astepahead.es

TARANGIRE NATIONAL PARK

Tarangire National Park (2,800 km² / 1,000 miles²) is centered around the Tarangire River, the most important water source in this eastern part of the Great Rift Valley, and is crucial as a dry season refuge for multitudes of migratory animals (especially zebra, but also wildebeest and other species), which move in here from the surrounding, mainly unprotected, areas. The park is perhaps most known for its ancient baobab tree forests and astounding numbers of elephants.



After a good rainy season migratory animals (especially wildebeest and zebra) will start entering the park in June and the numbers will increase as the dry season progresses. The baobabs drop their leaves to conserve water, and resemble ancient grey gnarled giants in artistic poses. By October multitudes of thirsty animals can be seen coming to water sources before midday (when temperatures are 86°F / 30°C or more). After drinking they seek shade and rest until the late afternoon, when they become active again. Solitary leopards and prides of lions feast at this time of year as

there is so much game. An hour spent overlooking the Tarangire river or Silale swamp can be an overwhelming experience due to the amazing variety and quantity of animals seen there.

A Step Ahead * Custom Guided Journeys

A Step Ahead S.L. Plaza Mayor 16, Baraguás, 22714 Huesca, SPAIN - Licence C.A.A. 230 -Fiscal (Tax) number B22347983
Tel:+34 974 36 33 31 Cell:+34 650 27 27 05 Fax:+34 974 56 00 75 Email info@astepahead.es Web www.astepahead.es

NOMAD'S KURO CAMP

Kuro Camp is situated in the far south of Tarangire National Park, in the shade of some acacia trees overlooking a plain near the upper reaches of the Taranigre River, and close to both Gursi and Silale Swamps.

The main open-sided lounge and dining tent has a thatched roof and is furnished with hides, canvas and colorful textiles.

The camp only has six spacious tents, each with a private veranda and an en suite bathroom which has a safari bucket shower and eco-flush loo.

Here you may enjoy the cup of tea or coffee brought to you tent at dawn, perhaps watching the sunrise from your veranda, and set out soon afterwards while the predators and other wildlife are more active. At this hour many of the plains game, such as zebra, will be spread out feeding. Birds will be visible, calling, and the big cats and maybe even the occasional hyaena will be moving about.

Usually, we return to camp for lunch and a siesta, and then set out again in the afternoon, as the day cools, and the wildlife moves into a frenzy of activity before the days' end. The light, pleasant temperature, colours, and sensation of serenity often mark this time of day.

Solar power is used to provide electricity to camp. There is a backup generator so power is available 24 hours a day. There are charging points in the rooms and main area.

ACTIVITIES

(If in italics it should be requested before the safari)

Game drives, night drives, bush picnics, bush walks (minimum age is 12), *hot air balloon flight (extra cost)*

COMMUNICATION - WiFi is available in the rooms but not in the main area. There is limited cellphone reception.



A Step Ahead * Custom Guided Journeys

A Step Ahead S.L. Plaza Mayor 16, Baraguás, 22714 Huesca, SPAIN - Licence C.A.A. 230 -Fiscal (Tax) number B22347983
Tel:+34 974 36 33 31 Cell:+34 650 27 27 05 Fax:+34 974 56 00 75 Email info@astepahead.es Web www.astepahead.es

NGORONGORO CRATER

Even without wildlife, the vast 180 km² (100 m²) Ngorongoro Crater, with its backdrop of extinct volcanos, would be amazing. However, the Crater is home to over 25,000 ungulates, and is said to have the highest density of large mammalian predators on Earth. This is undoubtedly the best place in Tanzania to view black rhino as well as large prides of lion, including magnificent black-maned males. It is also home to huge herds of wildebeest, zebra, Thomson's gazelle and other plains game. An alkaline lake in the floor of the Crater provides a habitat for colourful flamingo and a variety of other water birds.



Professor Bernard Grzimek best described the Ngorongoro Crater in his book, *The Serengeti Shall not Die*. He said, "It is impossible to give a fair description of the size and beauty of the Crater, for there is nothing with which one can compare it. It is one of the Wonders of the World."

We descend more than 2,000 feet on steep tracks cut into the crater wall to reach the open plains of the Crater floor for our game drive.

We can choose to stay in one of two very different places.

A Step Ahead * Custom Guided Journeys

A Step Ahead S.L. Plaza Mayor 16, Baraguás, 22714 Huesca, SPAIN - Licence C.A.A. 230 -Fiscal (Tax) number B22347983
Tel:+34 974 36 33 31 Cell:+34 650 27 27 05 Fax:+34 974 56 00 75 Email info@astepahead.es Web www.astepahead.es

NGORONGORO CRATER LODGE

Ngorongoro Crater Lodge is one of the most luxurious lodges in Africa, situated on the Crater rim with outstanding views, and conveniently located between the two one-way tracks (the Seneto Descent and the Leraï ascent) on the southern rim of the Crater.



The lodge has only 30 intimate cottages, divided into 3 separate sections or *camps*. Each camp has its own camp manager, kitchen, dining room and lounge. The lodge shop and main offices are conveniently located in between the three camps. Interestingly there is no swimming pool here, partly due to the cool temperatures at 2,300m (7,500 ft). The cottages are built on timber platforms, offering spectacular views from the deck of your room with the Crater spread out below. Often zebras or buffaloes are seen grazing in front.

In the late afternoon, after a wildlife-packed game drive in the Crater, you can go for a short walk around the lodge grounds (keeping an eye out for any large mammals), and visit the shop. While enjoying the view you can sit beside the fireplace and sip a glass of sherry, soak in a hot bathtub, or request a massage. Later you can socialize in the elaborate lounge sipping your favorite cocktail. At night you snuggle in crisp linen bedclothes warmed by an electric blanket.



ACTIVITIES (*If in italics it should be requested before the safari*) 1 game drive in the Crater, picnic breakfast or lunch, bird walk in lodge grounds, massages (extra cost), *Maasai cultural activity*.

COMMUNICATION - Rooms have land line phones for making and receiving calls. There is limited cellphone reception. WiFi is available in guest rooms but not in the main areas.

A Step Ahead * Custom Guided Journeys

A Step Ahead S.L. Plaza Mayor 16, Baraguás, 22714 Huesca, SPAIN - Licence C.A.A. 230 -Fiscal (Tax) number B22347983
Tel:+34 974 36 33 31 Cell:+34 650 27 27 05 Fax:+34 974 56 00 75 Email info@astepahead.es Web www.astepahead.es

ENTAMANU NGORONGORO CAMP

Entamanu Camp is tucked in an acacia forest on the Ngorongoro Crater rim at 2,200m (7,200ft), offering views eastwards and into the Crater below. This traditional-style tented camp, built on wooden decks, blends Maasai furnishings of cow and sheep-skin rugs and covers, beaded lampshades, and locally-made wicker armchairs with modern simplicity - and wonderful gas heaters that are a blessing at this altitude!



There are actually two camps - the main 7-room Entamanu Ngorongoro, and its smaller 4-room sister camp, Entamanu Private. The two have almost identical facilities. The main area of Entamanu Ngorongoro comprises one long tented structure on a wooden deck, with two dining rooms and a veranda at one end, and two lounges at the other, with a bar in between. The seven wood and canvas cabins, including two family units, have a large bedroom with a king-size double or two twin beds. The eastern wall consists of canvas, mosquito netting and heavy, clear plastic sheets, so the views can be enjoyed regardless of the temperature.

The rooms are adorned with cow-skin rugs, a writing desk, a charging unit for computers, cameras, etc and a gas heater. The en suite bathroom has twin wash-basins, wardrobe, shower, and flush toilet.

ACTIVITIES (*If in italics it should be requested before the safari*) 1 game drive in the Crater, picnic breakfast or lunch, bush walks near camp (minimum age 12 years), Maasai village visit, *Olduvai Gorge visit, local school visit.*



COMMUNICATION - There is limited cellphone reception. There is limited wifi in the main area.

A Step Ahead * Custom Guided Journeys

A Step Ahead S.L. Plaza Mayor 16, Baraguás, 22714 Huesca, SPAIN - Licence C.A.A. 230 -Fiscal (Tax) number B22347983
Tel:+34 974 36 33 31 Cell:+34 650 27 27 05 Fax:+34 974 56 00 75 Email info@astepahead.es Web www.astepahead.es

SERENGETI SEASONAL TENTED CAMP, MASAI TRIBAL AREA

From December to May this seasonal luxury camp is situated along the Kakesio River just inside the Ngorongoro Conservation Area, in a remote corner of the Serengeti ecosystem. It is located on the border of the woodlands and plains, which is perfect for taking advantage of both habitats. Giraffe and impala prefer the woodland habitats, and elephants and wild dogs pass through there too. The migratory herds prefer the Plains if there has been rain, and are often close to camp.



The camp is not far from Maasai bomas (villages), providing plenty of opportunity for cultural interaction. It is only about a ½ hour drive from the Rift Valley escarpment and its astounding views over Lake Eyasi. In this remote area we have the freedom to enjoy bush walks with the Dorobo and Hadzabe hunter-gatherer trackers and impromptu bush picnics.



The camp comprises six Meru tents, including two family suites. Each tent has a main bedroom area with large beds and ample shelf space for clothes, adorned with tasteful local fabrics and oriental rugs. There is a veranda and en suite bathroom with plumbed hot and cold water washbasin, flush loo and safari-style bucket shower. The family suites are 2 normal tents joined together by a sitting area. Camp has 240 volt electricity.

ACTIVITIES - Game drives, bush walks, Masai cultural activities. The camp also has a “fly camp” where you may set off on foot with an armed ranger, and experience a night out in the wilds.

COMMUNICATION - This is a true bush camp with no cellphone reception and no internet connection!



A Step Ahead * Custom Guided Journeys

A Step Ahead S.L. Plaza Mayor 16, Baraguás, 22714 Huesca, SPAIN - Licence C.A.A. 230 -Fiscal (Tax) number B22347983
Tel:+34 974 36 33 31 Cell:+34 650 27 27 05 Fax:+34 974 56 00 75 Email info@astepahead.es Web www.astepahead.es

SEASONAL TENTED CAMP, SOUTHERN SERENGETI PLAINS



Serian Kusini Camp is situated in the southern Serengeti Plains inside the Serengeti National Park, on the edge of the woodland and the southern Plains. Here the Plains are characterised by vast grasslands, interspersed with depressions, often with salt lakes or marshland in the lowest points. Its location bordering the woodlands and the plains is perfect for taking advantage of both habitats.

Wildlife movements depend largely on availability of lush grasses and water, and vary considerably in this area. Depending on the amount of recent rainfall, one habitat may be more productive in encountering game than another. Generally when it has rained a lot, the wildlife spreads out on the Serengeti Plains. When they dry up, many species follow water and nutritious grasses, often being forced into the woodland areas where there is good cover for predators.

The luxury camp comprises six Meru tents including two family tents, each with a veranda, main bedroom area adorned with tasteful local fabric and oriental rugs, with large beds and ample shelf space for your clothes, and an en suite bathroom area. The bathroom has plumbed hot and cold water washbasin, a flush loo, and a safari style bucket shower. There is 240volt electricity available in the camp.

ACTIVITIES - Game drives and picnic breakfasts.

COMMUNICATION - This is a true bush camp with no cellphone reception and no internet connection!

A Step Ahead * Custom Guided Journeys

A Step Ahead S.L. Plaza Mayor 16, Baraguás, 22714 Huesca, SPAIN - Licence C.A.A. 230 -Fiscal (Tax) number B22347983
Tel:+34 974 36 33 31 Cell:+34 650 27 27 05 Fax:+34 974 56 00 75 Email info@astepahead.es Web www.astepahead.es



COST OF THE ABOVE 13-DAY SAFARI 5TH JAN- 28TH FEB 2021

1. SAFARI COST with A Step Ahead professional guide and private vehicle(s) throughout

With Entamanu Camp in Ngorongoro - Per person - based on 2 people sharing each tent/room

Number of guests	4	6	8	10 or 12
With shared camp/lodge throughout	\$17,500	\$16,750	\$15,500	\$14,850

OR

With Ngorongoro Crater Lodge in Ngorongoro - Per person - based on 2 people sharing each tent/room

Number of guests	4	6	8	10 or 12
With shared camp/lodge throughout	\$19,850	\$18,990	\$17,750	\$16,990

2. PLUS FLIGHT - (approximate cost only due to frequent changes in fuel costs and taxes)

EITHER - SCHEDULED FLIGHT Serengeti to Arusha or Kilimanjaro - **Approximately US\$380 per person**

Scheduled flights leave at specific times from certain airstrips. We have to be at the airstrip ½ hour before departure. The aircraft will not wait for any latecomers. The flight might include stops to pick up and drop off other passengers on the way to our destination. Flights are costed per person.

OR - PRIVATE CHARTER Serengeti to Arusha or Kilimanjaro

For one 9-passenger capacity Cessna 208 or similar - **Approximately USD 4,500 for the aircraft**

Charter flights leave from the airstrip of choice (usually the nearest) and at the time requested upon booking. Flight are costed per aircraft, so **for a group of 10 or more TWO aircraft are required.**

Notes:

1. **Christmas & New Year:** If your trip is over Christmas and New Year, there will be a supplement of around US\$500 per person.
2. **Children:** There are substantial child discounts available for children up to 21. If you have children in your group, please let us know their ages and we can do a specific costing to include all child discounts.
3. **Exclusive camps:** We can book camps on exclusive basis, just for your group. Price on request.
4. **Park Fees:** Rates may increase if Tanzanian park entry, concession and other fees are increased.
5. **Extensions:** If you would like a longer safari we can extend by adding 2 nights at Lake Manyara or Tarangire National Parks, or at one of the deluxe Singita Grumeti Reserves properties. Beach extensions to Zanzibar or Pemba Island are possible - or visits to Rwanda or Uganda to track wild mountain gorillas. Children must be over 15 years of age to track gorillas.

Included in the above safari cost: Services of a professional A Step Ahead guide throughout the safari; services of experienced regional expert guides driving and accompanying the A Step Ahead guide; accommodation in best available twin-bedded tent/room according to the meal indication on the itinerary; services of a fully trained crew; laundry service from Day 2 to Day 12 when not a move day (not ladies underwear); ground transport in customized 4 wheel drive vehicles while on safari (from leaving Arusha to leaving the Serengeti); all park entry and camping fees; soft and alcoholic drinks (except premium brands); walking safaris where applicable; Flying Doctor membership (covers air evacuation to Nairobi Hospital in an emergency); transfers to/from the hotel and the airport on the first and last days.

Not included in the above safari cost: Items of a personal nature (e.g. visas, airport taxes, telephone or fax services, internet services etc.); hot-air balloon flights; premium brand alcoholic drinks, breakfast on the first day; dinner and any drinks or room extras on the last day; massages and spa treatments if available; medical or hospitalization costs in the event of illness or emergency; any kind of insurance; international flights; any regional flights (please see separate cost above); gratuities.

A Step Ahead * Custom Guided Journeys

A Step Ahead S.L. Plaza Mayor 16, Baraguás, 22714 Huesca, SPAIN - Licence C.A.A. 230 -Fiscal (Tax) number B22347983
Tel:+34 974 36 33 31 Cell:+34 650 27 27 05 Fax:+34 974 56 00 75 Email info@astepahead.es Web www.astepahead.es

PLEASE SEE OUR **TERMS & CONDITIONS (2020)** DOCUMENT FOR MORE DETAILED INFORMATION ON TERMS AND INCLUSIONS & EXCLUSIONS

A STEP AHEAD GUIDES

Our guides are keen and passionate bush professionals, who guide safaris because they absolutely love being in nature and helping their guests understand the world they cherish. They are mostly all-rounders, expert at the many varied fields a guide should know about, and are not limited to one field. They have experience traveling and being in the bush in many different countries in Africa and so are able to offer a broad view on most things. They are involved in designing custom itineraries for our guests. They compliment and work well with the locally based guides in the various countries or camps, and they ensure continuity and are good at adding special touches to a safari to make sure you have an amazing experience. Invariably once on safari with one of our *A Step Ahead* professional guides, our guests will recommend no other to their friends back home! That is the greatest tribute they give them. Most of our *A Step Ahead* safaris are led by one of our guides.



A Step Ahead * Custom Guided Journeys

A Step Ahead S.L. Plaza Mayor 16, Baraguás, 22714 Huesca, SPAIN - Licence C.A.A. 230 -Fiscal (Tax) number B22347983
Tel:+34 974 36 33 31 Cell:+34 650 27 27 05 Fax:+34 974 56 00 75 Email info@astepahead.es Web www.astepahead.es